

ABCDEFGHIJKLM-
NOPQRSTUVWXYZ
ABCDEFGHIJKLM-
NOPQRSTUVWXYZ
ABCDEFGHIJKLM-
NOPQRSTUVWXYZ

Uniformed Type Specimen

+m

Designed by Adam Welton
adamwdesign.co.uk

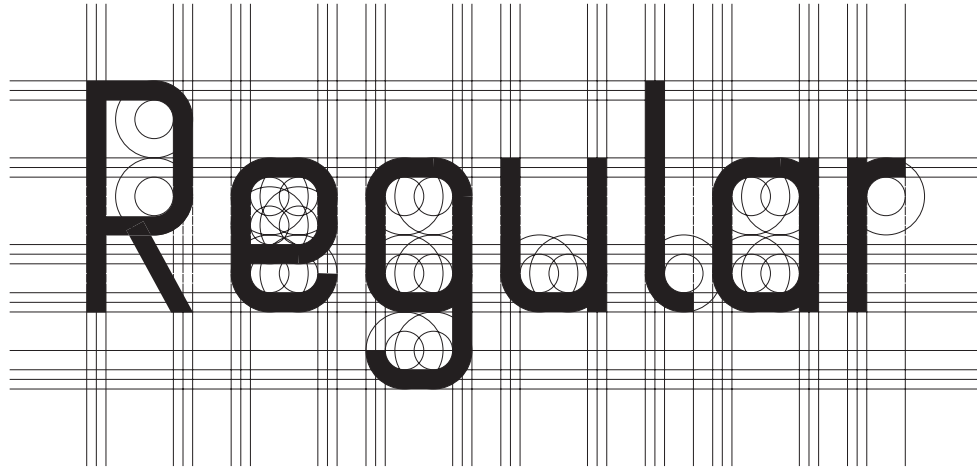
Uniformed is a simple yet distinctive sans serif headline font. Its base structure is designed with strict rules, formed only of 4 shapes within its proportions. Uniformed has a long and condensed appearance, which makes it ideally suited for use in headlines. The typeface is available in 3 font weights including 3 italic variations.

Uniformed Regular

ABCDEFGHIJKLMNOPQRSTUVWXYZ
abcdefghijklmnopqrstuvwxyz
0123456789

Uniformed Italic

*ABCDEFGHIJKLMNOPQRSTUVWXYZ
abcdefghijklmnopqrstuvwxyz
0123456789*



42pt

Uniformed is a *simple yet distinctive sans serif headline font.*

16pt

Uniformed is a *simple yet distinctive sans serif headline font.* It's *base structure* is designed with strict rules formed only of *4 shapes* within its proportions. Uniformed is *designed* to be a headline font.

30pt

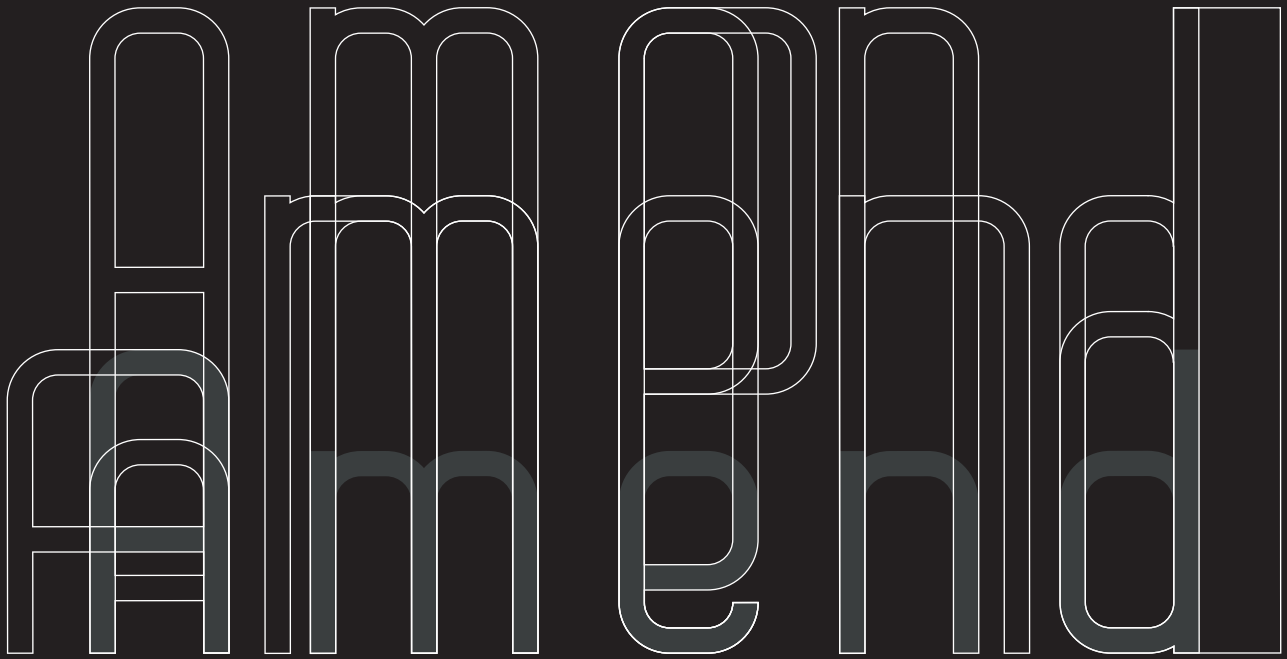
Uniformed is a *simple yet distinctive sans serif headline font.* It's *base structure* is *designed with strict rules* formed only of *4 shapes* within its proportions. *Uniformed* is designed to be a headline font due it's long and condensed appearance.

12pt

Uniformed is a *simple yet distinctive sans serif headline font.* It's *base structure* is designed with strict rules formed only of *4 shapes* within its *proportions*. Uniformed is designed to be a headline font due it's long and *condensed appearance*. It is available in *3 font weights* including *3 italic variations*.

9pt

Uniformed is a simple yet distinctive sans serif headline font. It's *base structure* is designed with *strict rules* formed only of *4 shapes* *within* its proportions. Uniformed is designed to be a headline font due it's long and condensed *appearance*. It is available in *3 font weights* including *3 italic variations*.



Due to Uniformed being formed of simple shapes it allows users to customise the shape with ease. Due to specifically placed anchors you can modify the height of all the characters the width and the weight to suit the designs needs without having to reconfigure curves within the character properties.

Uniformed Light

ABCDEFGHIJKLMNOPQRSTUVWXYZ
abcdefghijklmnopqrstuvwxyz
0123456789

Uniformed Light Italic

ABCDEFGHIJKLMNOPQRSTUVWXYZ
abcdefghijklmnopqrstuvwxyz
0123456789

Light

42pt

Uniformed is a *simple* yet *distinctive* sans serif headline font.

38pt

Uniformed is a *simple* yet *distinctive* sans serif *headline font*. It's base structure is *designed with strict* rules formed only of 4 shapes within its proportions. *Uniformed* is designed to be a headline font due it's long and condensed appearance.

16pt

Uniformed is a *simple* yet *distinctive* sans serif headline font. It's *base structure* is designed with strict rules formed only of 4 shapes within its proportions. Uniformed is *designed* to be a headline font.

12pt

Uniformed is a *simple yet distinctive* sans serif headline font. It's *base structure* is designed with strict rules formed only of 4 shapes within its *proportions*. Uniformed is designed to be a headline font due it's long and *condensed* appearance. It is available in 3 font weights including 3 *italic variations*.

9pt

Uniformed is a *simple* yet *distinctive* sans serif headline font. It's *base structure* is designed with *strict rules* formed only of 4 shapes *within* its proportions. Uniformed is designed to be a headline font due it's long and *condensed appearance*. It is available in 3 font weights including 3 *italic variations*.

REGULAR,
REGULAR, ITALIC,

LIGHT,
LIGHT, ITALIC



Uniformed Thin

A B C D E F G H I J K L M N O P Q R S T U V W X Y Z

a b c d e f g h i j k l m n o p q r s t u v w x y z

0 1 2 3 4 5 6 7 8 9

Uniformed Thin Italic

A B C D E F G H I J K L M N O P Q R S T U V W X Y Z

a b c d e f g h i j k l m n o p q r s t u v w x y z

0 1 2 3 4 5 6 7 8 9

Thin

42pt

Uniformed is a *simple* yet *distinctive* sans serif headline font.

38pt

Uniformed is a *simple* yet distinctive sans serif *headline font*. It's base structure is *designed with* strict rules formed only of 4 shapes within its proportions. *Uniformed* is designed to be a headline font due it's long and condensed appearance.

16pt

Uniformed is a *simple* yet distinctive *sans serif* headline font. It's *base structure* is designed with strict rules formed only of 4 shapes within its proportions. Uniformed is *designed to be a headline font*.

12pt

Uniformed is a *simple yet distinctive* sans serif headline font. It's *base structure* is designed with strict rules formed only of 4 shapes within its *proportions*. Uniformed is designed to be a headline font due it's long and *condensed* appearance. It is available in 3 font weights including 3 *italic variations*.

9pt

Uniformed is a simple yet distinctive sans serif headline font. It's base structure is designed with *strict rules* formed only of 4 shapes *within* its proportions. Uniformed is designed to be a headline font due it's long and condensed *appearance*. It is available in 3 font weights including 3 *italic variations*.

Uniformed Type Specimen



Designed by Adam Welton
adamwdesign.co.uk

